



DAMEN STAN PONTOON® 4113

"YN 523702"

GENERAL

YARD NUMBER	523702
DELIVERY DATE	Available
TYPICAL APPLICATIONS	Deck Cargo, RoRo Cargo
TYPICAL AREA OF OPERATION	Deep sea, Coastal waters, Harbours, Inland waters
CLASSIFICATION	Lloyd's Register + 100 AT Pontoon IWS for non-propelled and unmanned vessels

DIMENSIONS

LENGTH MOULDED	41,40 m
BEAM MOULDED	13,00 m
DEPTH MOULDED	3,00 m
DRAUGHT MAX	2,40 m
DEADW .MAX.	980 ton

CAPACITIES

DECK LOAD	10 ton/m ²
BALLAST TANKS	10 pcs. : 1.475 m ³
DECK THICKNESS	12 mm extra heavy deck

DESIGN CONDITIONS

SEA WATER TEMPERATURE	0° to +35° C
OUTSIDE AIR TEMPERATURE	-5° to +45° C

STANDARD EXECUTION

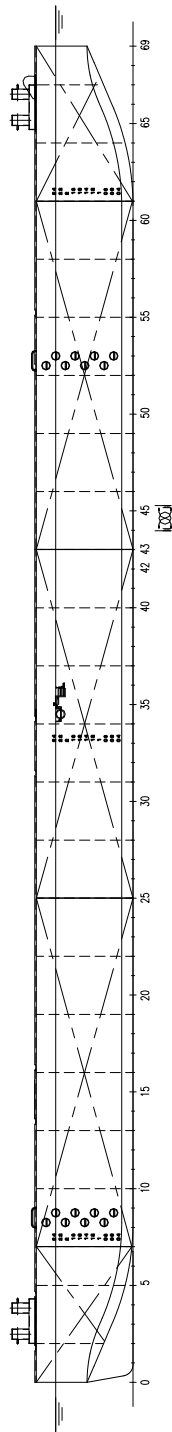
TOWING BRACKETS	One on PS and one on SB at foredeck
BOLLARDS	6 pcs.
DRAUGHT MARKS	At fore, midship and aft on PS and SB every 20 cm
BOARDING LADDERS	2 on SB and 2 on PS in recesses of the hull
CATHODIC PROTECTION	Zinc anodes on underwater part of the hull
MANHOLES	Flush single point closing manholes
FENDERING	Tyre fender system

OPTIONAL EQUIPMENT

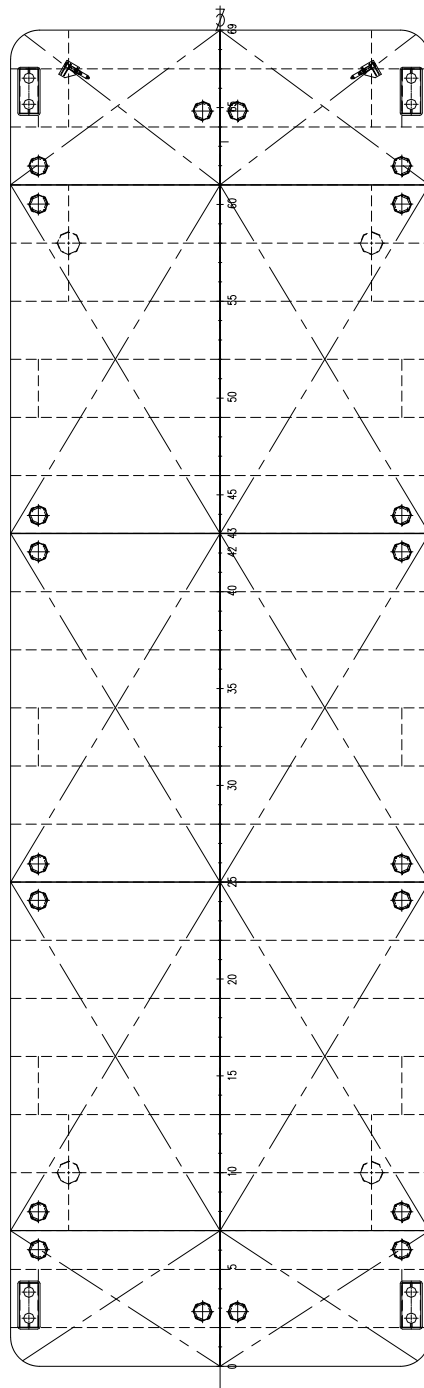
TOW CHAINS	Tow chains for connection to a towing bridle
NAVIGATION LIGHTING	Navigation lights according to the standard for international towage
RAILING	Removable stanchions with wire guard rails

Mentioned deadweights are estimated and excluding optional equipment.

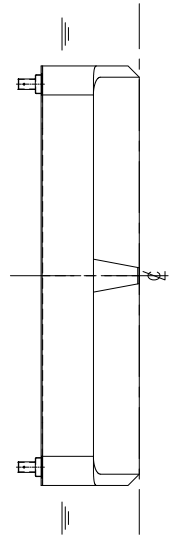
SIDE VIEW



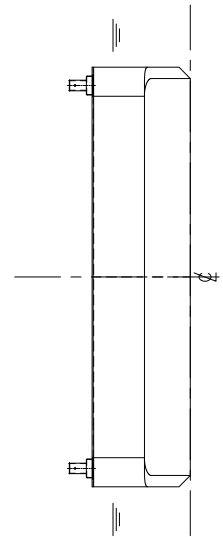
TOP VIEW



AFT VIEW



FRONT VIEW



DAMEN STAN PONTOON® 4113

"YN 523702"

DAMEN

DAMEN SHIPYARDS GORINCHEM

Member of the DAMEN SHIPYARDS GROUP



Industrieterrein Avelingen West 20
4202 MS Gorinchem

P.O. Box 1
4200 AA Gorinchem
The Netherlands

phone +31 (0)183 63 99 11
fax +31 (0)183 63 21 89

info@damen.nl
www.damen.nl